

RWC5020A Application Program

Operating Manual

Version 1.14
(RWC5020A SW Version 1.14)

July 2018

Contents

I. Getting Started.....	3
1.1 Download and Installation	4
1.2 Start the Application	6
1.3 GUI Structure.....	7
II. Project Menus	8
2.1 Project Menu.....	9
2.1.1 Project	9
2.1.2 DUT	10
2.2 Setup Menu	11
2.2.1 Connect RWC5020A.....	11
2.2.2 Control DUT	11
2.2.3 Test Configuration.....	14
III. Test Functions	17
3.1 Certification Test.....	18
3.1.1 LoRaWAN Certification	18
3.1.2 Operator Certification	18
3.1.3 Certification Test Items	18
3.2 Performance Test	21
3.2.1 How to Use	21
3.2.2 Test options	24
3.3 Link Analyzer	26
3.3.1 Dumping link message.....	26
3.3.2 MAC commands editor	26
3.4 Utilities	27
3.4.1 DUT Control	27
3.4.2 Tester (RWC5020A) Control	28
3.4.3 Screen Capture	29
3.4.4 Function for Manufacturing	29
IV. Report Functions	33
4.1 Report File Manager	34
4.1.1 Create Report	34
4.1.2 How to Open the Saved Report File	34
V. Revision History.....	35

I. Getting Started

This chapter explains how to download and start RWC5020A application program.

- 1.1 Download and Installation
- 1.2 Start the Application
- 1.3 GUI Structure

1.1 Download and Installation

RWC5020A application program is provided by email or download link and the downloaded file can be unzipped into users' directory. The following figures show an example.

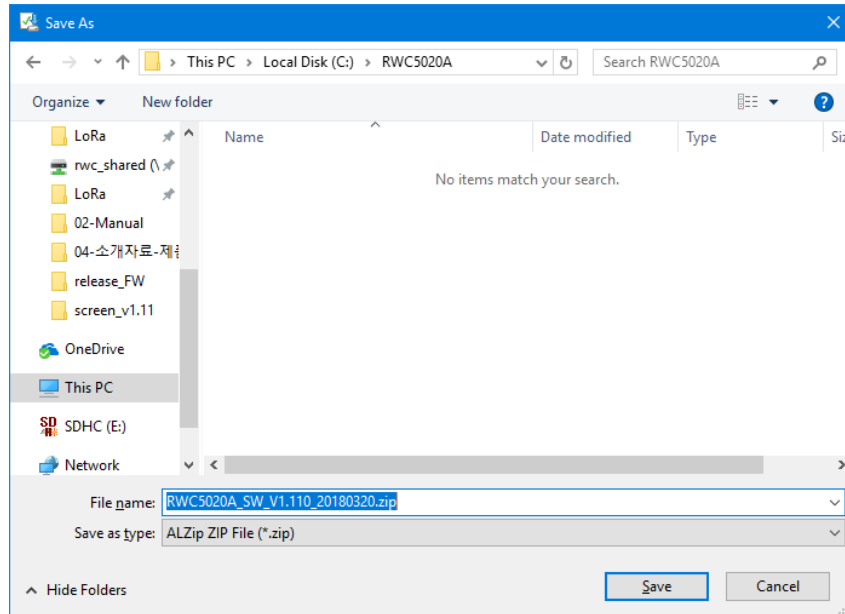


Fig 1.1 Downloading Zip file

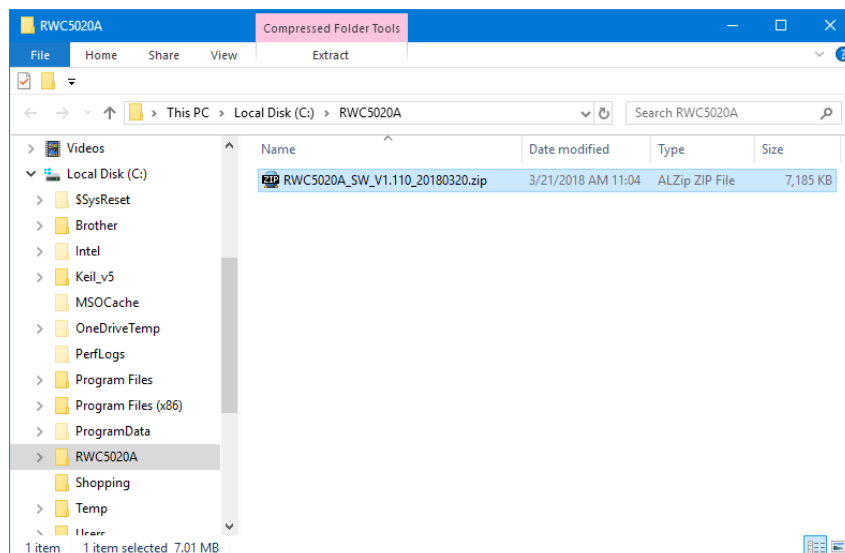


Fig 1.2 Downloaded into User's Directory

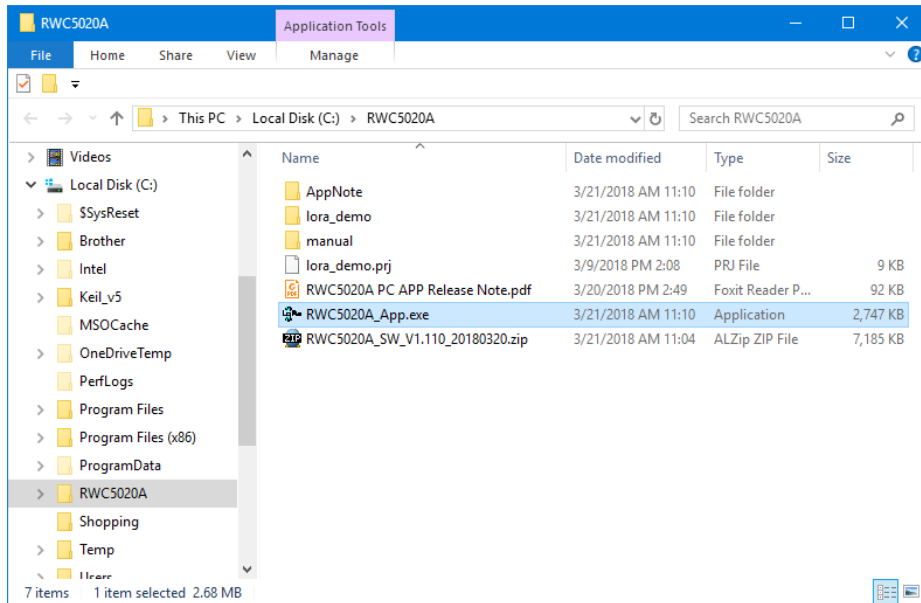


Fig 1.3 Unzipped Files

After unzipped, the following files or directories are shown:

- the executable file 'RWC5020A_App.exe',
- the Release Note for the current version release,
- the example project 'lora_demo.prj',
- the directory including manual documents,
- and the directory including application notes.

Note: Operating system for User's PC is recommended to be used Windows 7 or later.

1.2 Start the Application

Execute the application 'RWC5020A_App.exe'. Most likely the following popup window will be shown at the first execution if Ethernet configuration between the Tester and user's PC is not done correctly. If Ethernet configuration done, it will not happen any longer.

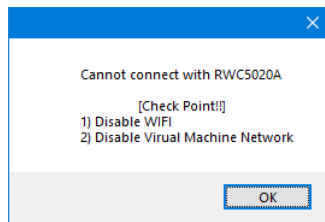


Fig 1.4 Popup Message for Connection Alert

After clicking OK, the application will be opened as the following figure.

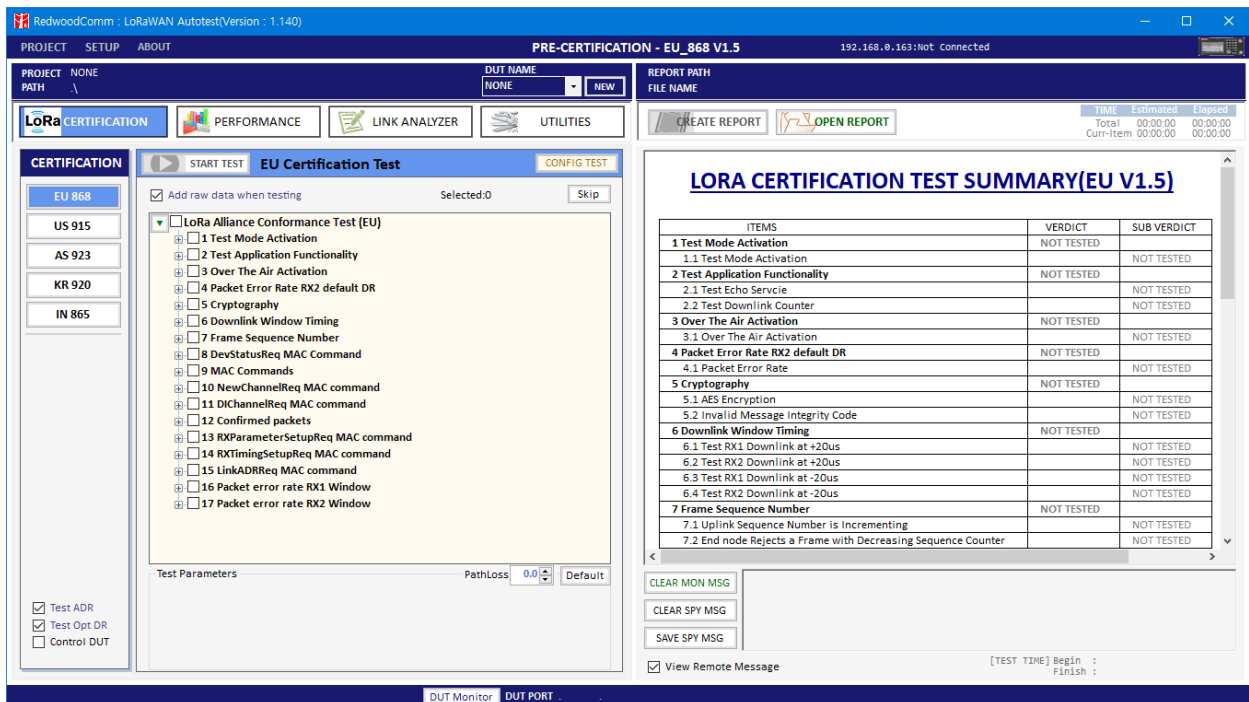


Fig 1.5 Initial Screen of the Application

1.3 GUI Structure

RWC5020A application program consists of three categories: Project Menus, Test Functions, and Report Functions. The next chapters will include the detail explanation about each category respectively. In the following figure, blue color boxed functions are project menu functions, and red color boxed functions are test related ones, and green color boxed functions are report related ones.

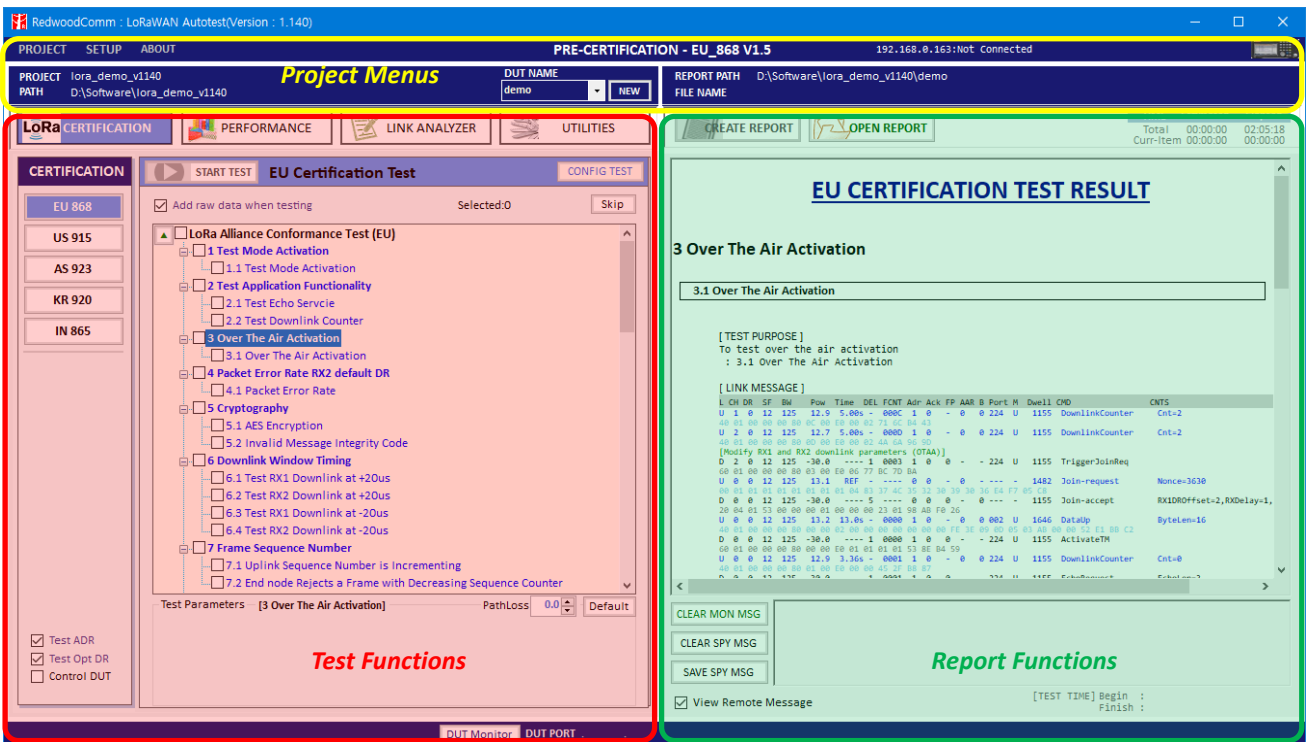


Fig 1.6 Categories of the Application

II. Project Menus

This chapter explains how to handle a project, DUT, test condition and test environment. With Top Menus, user can create or open a project file, or delete currently opened project, and manage DUT environment file. User can also access to User Manual file and optional information.

2.1 Project Menu

2.2 Setup Menu

2.3 About Menu

2.1 Project Menu

The application has three top menu; [PROJECT], [SETUP], and [ABOUT]. This section shows how to use and configure them before tests.

2.1.1 Project

Before starting use of the application, at least two basic works should be done; one is creating project and the other is creating a DUT. When a new project is created, a 'project_name.ini' file will be generated. When a new DUT is created in the project, a 'DUT_name.ini' file will be generated.

2.1.1.1 New Project

[New Project] creates a new project file. Before test, a project file and a DUT file must be created or opened. Project may have many DUTs

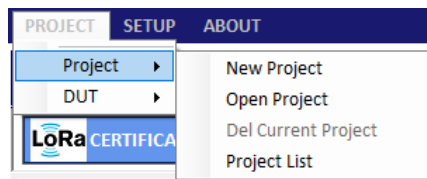


Fig 2.1 Project Menu



Fig 2.2 Example of a new project (DUT empty)

2.1.1.2 Open Project

[Open project] opens an existing project file which the user selects. [Open project] also opens the last tested DUT file automatically when the application starts, if 'Load last project at start' is checked in [SETUP] -> [Utility Environment].

2.1.1.3 Del Current Project

[Del Current Project] deletes currently opened project including all DUT files in project folder. The deleted project cannot be recovered. Be careful to delete a project.


2.1.1.4 Project List

[Project List] shows the list of projects in current directory.

2.1.2 DUT

In this application, DUT means device name to be tested. DUT is a member of a project. You can create many DUTs. If a new DUT is created, a 'DUT_name.ini' file will be generated. It includes information of DUT's test environment. If you want to test a new DUT, you'd better create a new DUT file and test.

2.1.2.1 New DUT

When [New DUT] of DUT Menu or NEW button of  clicked, the 'NEW DUT CREATION' window which helps you create a new DUT will be shown.

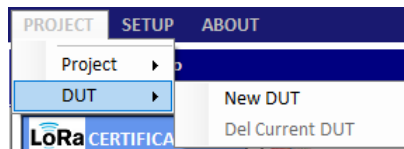


Fig 2.3 DUT Menu

Type a DUT name and click [CREATE] button.

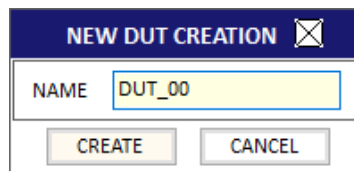


Fig 2.4 Creation of a new DUT

The list of DUT names that you created will be shown in DUT list box as the following figure.

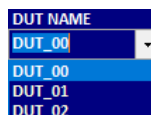


Fig 2.5 List of DUT names

2.1.2.2 DEL Current DUT


[DEL Current DUT] deletes currently opened DUT file. The deleted DUT file cannot be recovered.

2.2 Setup Menu

2.2.1 Connect RWC5020A

RWC5020A Application works under Ethernet connection between user's PC and RWC5020A.

2.2.1.1 Open RWC5020A CONTROL PORT window

Clicking [Connect RWC5020A] of SETUP Menu or clicking  icon shows the 'RWC5020A CONTROL PORT' window which helps you setup RWC5020A's IP.

2.2.1.2 Setup IP

Setup the IP address same as the RWC5020A's connected to the PC and click [CONNECT] button. If PC recognizes a RWC5020A, the [CONNECT] will be changed to [CONNECTED].

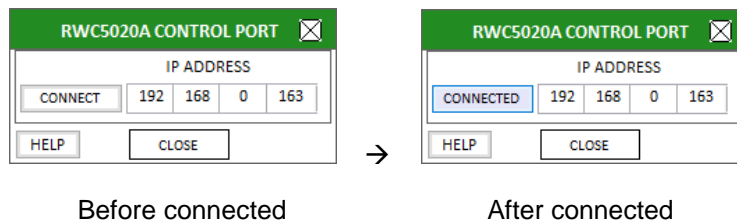


Fig 2.6 IP Setup for connection

2.2.2 Control DUT

Control DUT menu consists of five sub menus : Open Port, Load User Cmds, Show User Cmds, Show DUT Monitor, and Make Cmds Template.

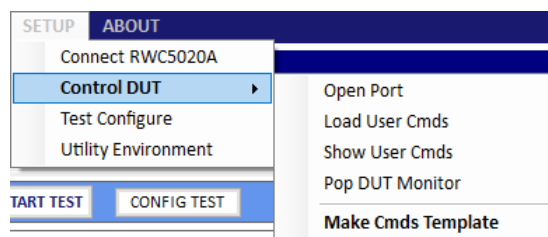


Fig 2.7 Control DUT Menu

2.2.2.1 Open PORT

[Open PORT] shows a 'DUT CONTROL PORT' window to setup and open UART port for DUT control. After configuring its port number and baud rate, click [OPEN PORT] button.

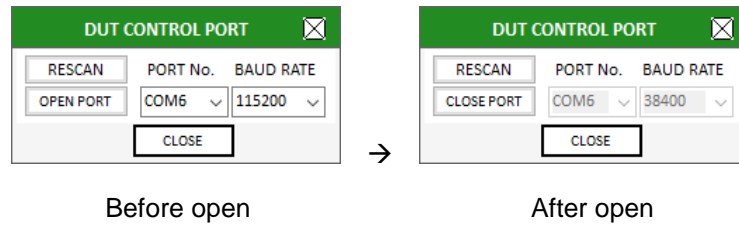


Fig 2.8 DUT Control Port Setup

2.2.2.2 Load User Cmds

[Load User Cmds] pops up a 'OpenFile Window' for opening a DUT control file(.txt) which describes configuration and user commands. If you want to create your own command file, use [Make Cmds Template] function which helps you create a template file.

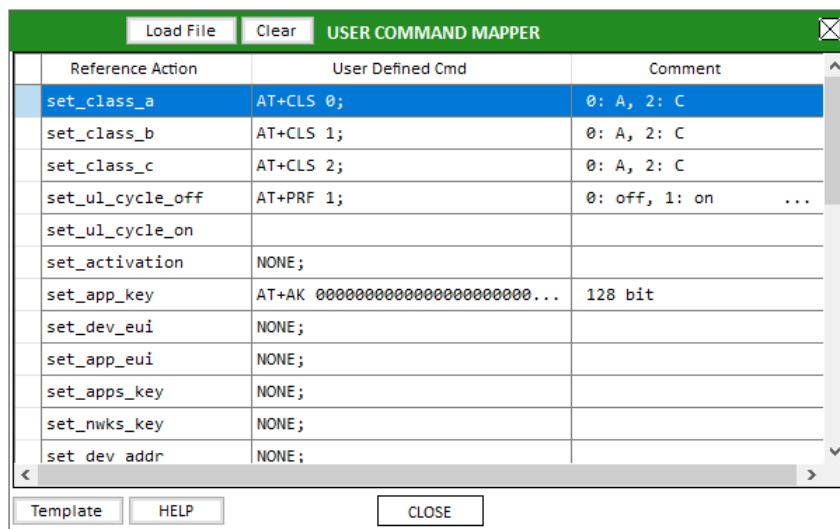
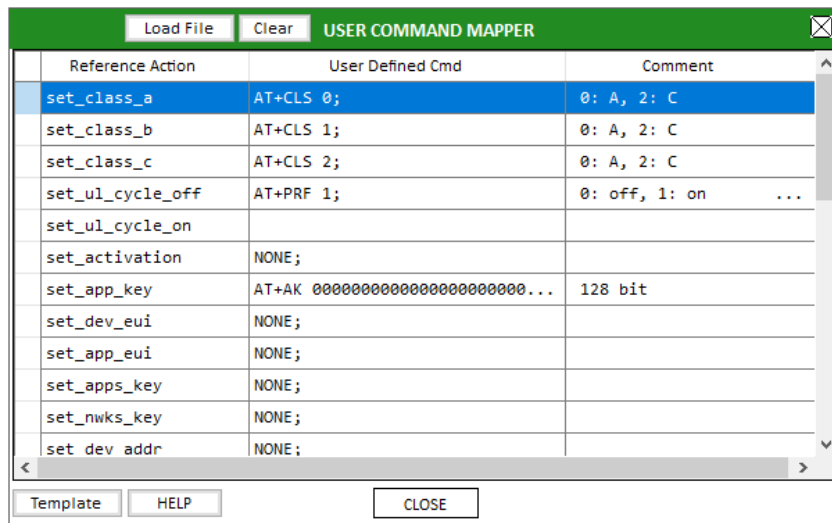


Fig 2.8 Example of Load User Cmds

2.2.2.3 Show User Cmds

[Show User Cmds] pops up the 'COMMAND LIST for DUT CONTROL' window and shows user-defined commands which are loaded currently. To see user's own commands with this window, user has to load a ready-made DUT control file(.txt).



Reference Action	User Defined Cmd	Comment
set_class_a	AT+CLS 0;	0: A, 2: C
set_class_b	AT+CLS 1;	0: A, 2: C
set_class_c	AT+CLS 2;	0: A, 2: C
set_ul_cycle_off	AT+PRF 1;	0: off, 1: on ...
set_ul_cycle_on		
set_activation	NONE;	
set_app_key	AT+AK 000000000000000000000000...	128 bit
set_dev_eui	NONE;	
set_app_eui	NONE;	
set_apps_key	NONE;	
set_nwks_key	NONE;	
set dev addr	NONE;	

Fig 2.9 Example of Show User Cmds

2.2.2.4 Show DUT Monitor

[Show DUT Monitor] shows a popup window which shows the DUT's response. User may send control commands using the popup window.

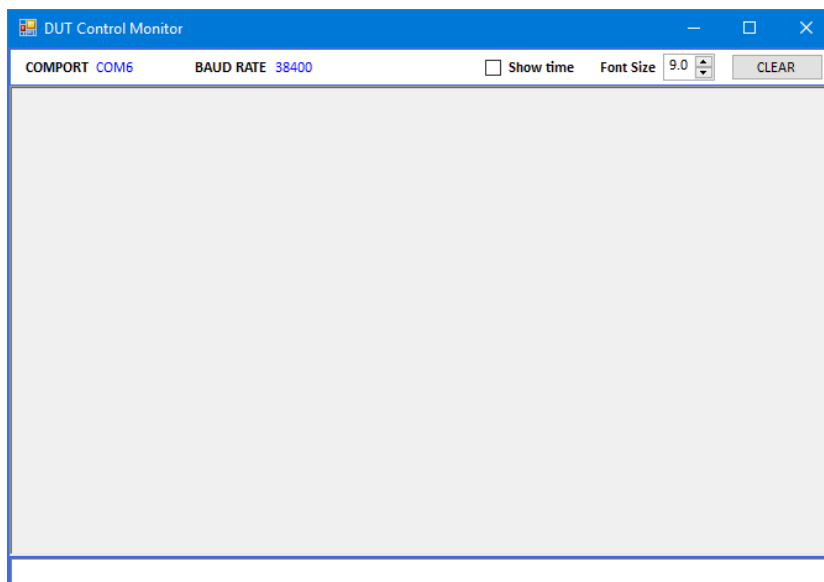
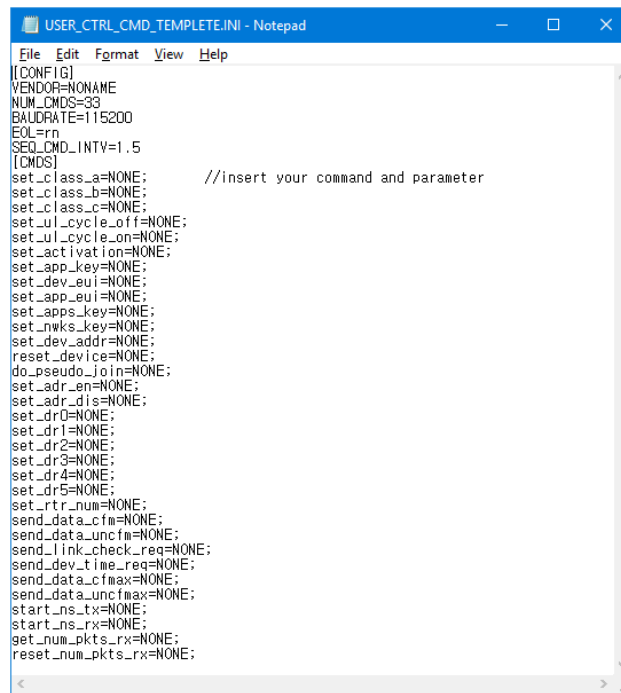


Fig 2.10 DUT Monitor screen

2.2.2.5 Make Cmds Template

[Make Cmds Template] creates a template file function which can help user create user's own control file by showing a template file. User can fill it up and save it as a text file (.txt).



```

USER_CTRL_CMD_TEMPLTE.INI - Notepad
File Edit Format View Help
[[CONFIG]]
VENDOR=NONAME
NUM_CMDS=33
BAUDRATE=115200
EOL=rn
SEQ_CMD_INTV=1.5
[[CMDS]]
set_class_a=NONE; //insert your command and parameter
set_class_b=NONE;
set_class_c=NONE;
set_ul_cycle_off=NONE;
set_ul_cycle_on=NONE;
set_activation=NONE;
set_app_key=NONE;
set_dev_eui=NONE;
set_app_eui=NONE;
set_apps_key=NONE;
set_nwks_key=NONE;
set_dev_addr=NONE;
reset_device=NONE;
do_pseudo_join=NONE;
set_addr_en=NONE;
set_addr_dis=NONE;
set_drD=NONE;
set_dr1=NONE;
set_dr2=NONE;
set_dr3=NONE;
set_dr4=NONE;
set_dr5=NONE;
set_rtr_num=NONE;
send_data_cfm=NONE;
send_data_uncfm=NONE;
send_link_check_req=NONE;
send_dev_tlm_req=NONE;
send_data_cfm_max=NONE;
send_data_uncfm_max=NONE;
start_ns_tx=NONE;
start_ns_rx=NONE;
get_num_pkts_rx=NONE;
reset_num_pkts_rx=NONE;
    
```

Fig 2.11 Template of User Control Commands

2.2.3 Test Configuration

[Test Configure] or **CONFIG TEST** shows a window in which user can setup the basic properties of DUT. This configuration is applied to all test functions of the application.

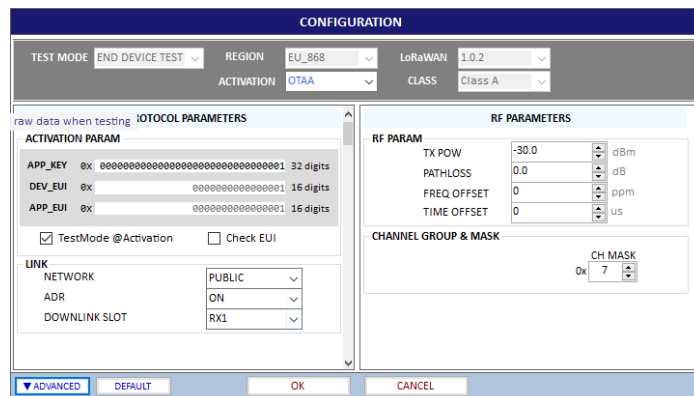
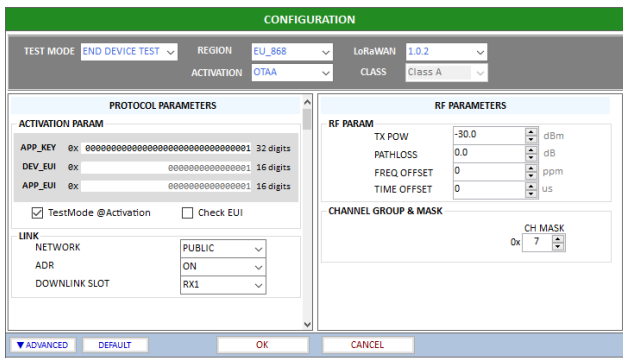
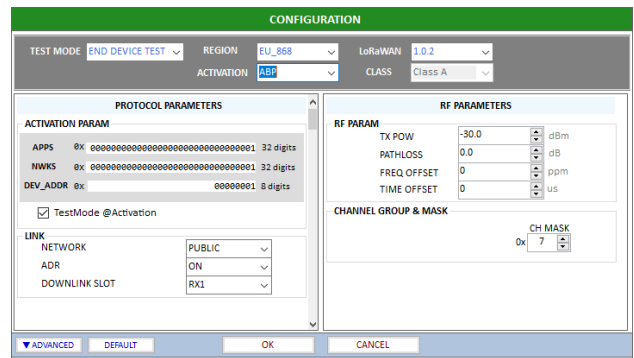


Fig 2.12 Basic Configuration window for Certification Test

Clicking the value of 'KEY/CTRL' shows a popup window for protocol key values configuration in which user can setup keys and switch DUT between OTAA and ABP mode. In case of regions that the number of channels is greater than 8, the window also shows the selection of channel group. This configuration is applied to all test functions of the application.

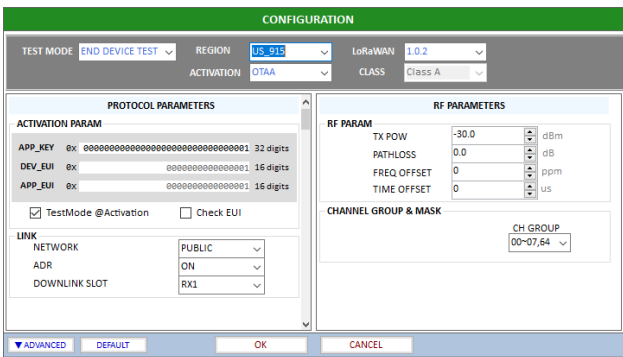


OTAA mode

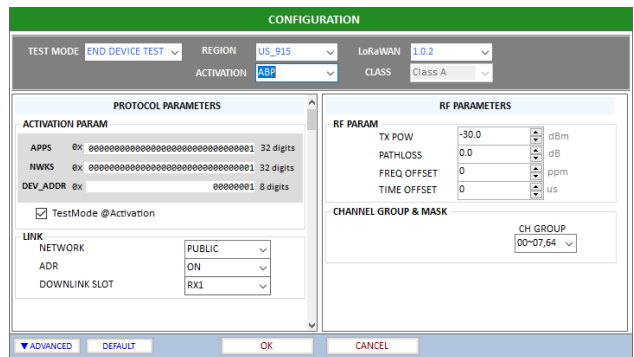


ABP mode

Fig 2.13 Protocol Keys Configuration window



OTAA mode



ABP mode

Fig 2.14 Protocol Keys Configuration window for US/CA Region

Clicking 'SETUP' for CH MASK in Test Configuration window shows a popup window for modification of one of channel frequencies.

Click the [ADVANCED](#) button in order to see detail channel information as the following configuration parameter window.

CONFIGURATION

TEST MODE: **END DEVICE TEST** ▾
REGION: **KR_920** ▾
LoRaWAN: **1.0.2** ▾

ACTIVATION: **ABP** ▾
CLASS: **Class A** ▾

PROTOCOL PARAMETERS

ACTIVATION PARAM

APPS 0x 00000000000000000000000000000001 32 digits

NWKS 0x 00000000000000000000000000000001 32 digits

DEV_ADDR 0x 00000001 8 digits

TestMode @Activation

LINK

NETWORK PUBLIC ▾

ADR ON ▾

DOWNLINK SLOT RX1 ▾

DRATE FRMT 0 ▾

TIME INFO

PC Time

YEAR 2018 ▾

MONTH 10 ▾

DATE 11 ▾

HOUR 13 ▾

MINUTE 36 ▾

FREQ OFFSET 0 ▾ ppm

TIME OFFSET 0 ▾ us

CHANNEL GROUP & MASK

OPERATOR LoRaWAN ▾

CH MASK 0x 7F ▾

CHANNEL INFO.

RX2 FREQ 921.900 MHz

RX2 DR DR_0 ▾

UpLink Channel List		DownLink Channel List	
UL_CH_00	922.100000	DL_CH_00	922.100000
UL_CH_01	922.300000	DL_CH_01	922.300000
UL_CH_02	922.500000	DL_CH_02	922.500000
UL_CH_03	921.900000	DL_CH_03	921.900000
UL_CH_04	922.700000	DL_CH_04	922.700000
UL_CH_05	922.900000	DL_CH_05	922.900000
UL_CH_06	923.100000	DL_CH_06	923.100000

Modify UL_CH 922.700000 ▾

▲ BASIC
DEFAULT
OK
CANCEL

Fig 2.15 Modification of Channel Frequency

III. Test Functions

This chapter explains how to use pre-certification tests, RF performance tests, Link Analyzer, and other utilities. With test functions, user can select test mode of test items, handle test operation, and setup test environment.

- 3.1 Certification Test
- 3.2 Performance Test
- 3.3 Link Analyzer
- 3.4 Utilities

3.1 Certification Test

3.1.1 LoRaWAN Certification

There are four LoRaWAN Certification functions like EU, US/CA, AS, KR, and IN. Other regional certification functions will be added as soon as they are published. If you select one of the certification functions, regional parameters will be configured automatically according to the certification.

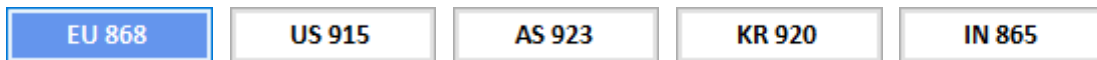


Fig 3.1 Selection of Region for LoRaWAN Certification Test

3.1.2 Operator Certification

There is an Operator Certification option, SKT. Other private certifications could be added according to further requests.



Fig 3.2 Selection of Region for Operator Certification Test

3.1.3 Certification Test Items

3.1.3.1 Meaning of Text Colors

Each color has the meaning of verdict; the blue-colored is PASSED, the red-colored is FAILED, the black colored is NOT_TESTED, and the Gray is not-selected OPTIONAL item.

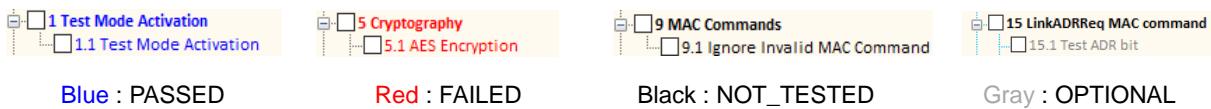


Fig 3.3 Meaning of Text Color

3.1.3.2 Selection and Test Parameter Configuration

Select the test items to be tested by clicking the check boxes in front of the subtitles. If you click a test item, its test parameters will be shown at the bottom of test items.

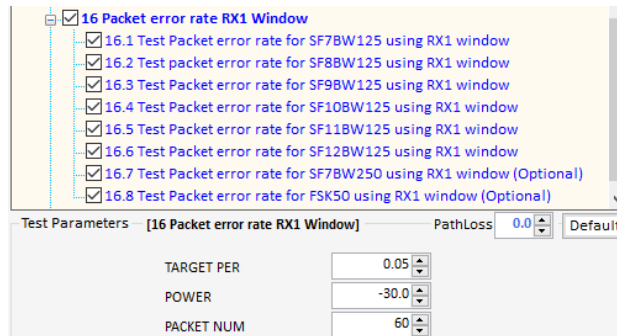



Fig 3.4 Configuration of Test Parameters

3.1.3.3 Start Test

Just click  button and all selected items will be tested sequentially. Keep in mind RWC5020A application program will automatically overwrite the result after each item is tested without asking whether selected item was tested previously or not. In other words, the application always keeps the recent test results.

3.1.3.4 Control DUT

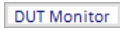
If you want to control DUT while test, check the **Control DUT** check box, then PC application will send control command according to the loaded user control command file. Refer to 2.2.2 for DUT control. You can see the transmitted commands and received responses to/from DUT respectively on DUT control monitor window. Click the  button and a large DUT control monitor will be pop up.



Fig 3.5 DUT Control Monitor

COMPORT and BAUDRATE information of the current control port will be displayed as follows.



Fig 3.6 COMPORT and BAUDRATE after connection.

3.1.3.5 Test Result – Summary Table

When click the certification title, the test summary table will be shown on result window.

ITEMS	VERDICT	SUB-VERDICT
1 Test Mode Activation	PASS	
1.1 Test Mode Activation	PASS	PASS
2 Test Application Functionality	PASS	
2.1 Test Echo Service	PASS	PASS
2.2 Test Downlink Counter	PASS	PASS
3 Over The Air Activation	PASS	
3.1 Over The Air Activation	PASS	PASS
4 Packet Error Rate RX2 default DR	PASS	
4.1 Packet Error Rate	PASS	PASS
5 Cryptography	PASS	
5.1 AES Encryption	PASS	PASS
5.2 Invalid Message Integrity Code	PASS	PASS
6 Downlink Window Timing	PASS	
6.1 Test RX1 Downlink at +20us	PASS	PASS
6.2 Test RX2 Downlink at +20us	PASS	PASS
6.3 Test RX1 Downlink at -20us	PASS	PASS
6.4 Test RX2 Downlink at -20us	PASS	PASS
7 Frame Sequence Number	PASS	
7.1 Uplink Sequence Number is Incrementing	PASS	PASS
7.2 End node Rejects a Frame with Decreasing Sequence Counter	PASS	PASS
8 DevStatusReq MAC Command	PASS	
8.1 DevStatusReq MAC Command	PASS	PASS
9 MAC Commands	PASS	
9.1 MAC Commands	PASS	PASS
10 NewChannelReq MAC command	PASS	
10.1 Tests modified only default channel tests common CH 0	PASS	PASS

Fig 3.7 Test Result – Summary Table

3.1.3.6 Test Result – Detail Report

Clicking the sub title, detail test result will be shown on result window

3 Over The Air Activation

3.1 Over The Air Activation

[TEST PURPOSE]
To test over the air activation
: 3.1 Over The Air Activation

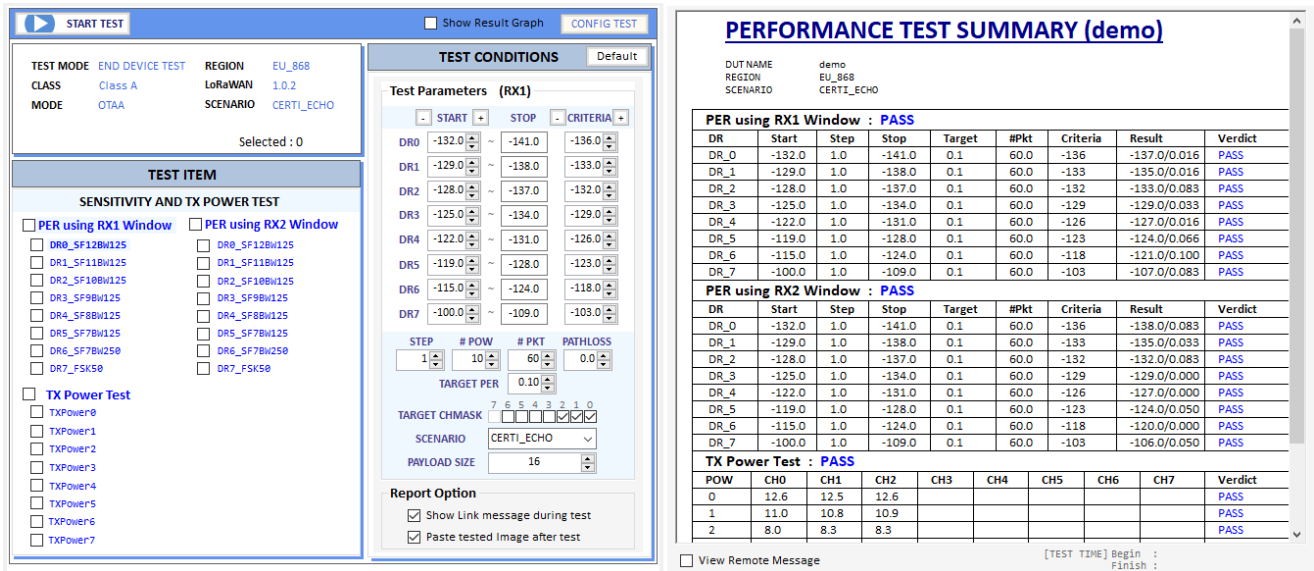
[LINK MESSAGE]

L	Ch	Dr	SF	Bw	Power	Time	DEL	FONT	Addr	Ack	FP	ASB	B	Port	M	Dwell	Cmd	CNTS		
U	1	0	12	125	12.9	5.88s	-	0000	1	0	-	0	224	U	1155	DownLinkCounter	Cnt-2			
U	2	0	12	125	12.7	5.88s	-	0000	1	0	-	0	224	U	1155	DownLinkCounter	Cnt-2			
D	2	0	12	125	-30.0	-	-	0003	1	0	-	0	-	-	-	-	224	U	1155	TriggerJoinReq
D	0	0	12	125	-30.0	-	-	0001	1	0	-	0	-	-	-	-	224	U	1155	Join-request
D	0	0	12	125	-30.0	-	-	0005	1	0	-	0	-	-	-	-	224	U	1155	Join-accept
D	0	0	12	125	-30.0	-	-	0000	1	0	-	0	-	-	-	-	224	U	1155	ActivateTM
D	0	0	12	125	-30.0	-	-	0001	1	0	-	0	-	-	-	-	224	U	1155	DownLinkCounter
D	0	0	12	125	-30.0	-	-	0001	1	0	-	0	-	-	-	-	224	U	1155	EchoRequest
D	0	0	12	125	-30.0	-	-	0001	1	0	-	0	-	-	-	-	224	U	1155	EchoResponse
D	0	0	12	125	-30.0	-	-	0001	1	0	-	0	-	-	-	-	224	U	1155	EchoRequest
D	0	0	12	125	-30.0	-	-	0001	1	0	-	0	-	-	-	-	224	U	1155	EchoResponse
D	0	0	12	125	-30.0	-	-	0001	1	0	-	0	-	-	-	-	224	U	1155	DownLinkCounter

Fig 3.8 Test Result – Detail Report

3.2 Performance Test

Performance test function makes RWC5020A search the sensitivity level by measuring the PER (Packet Error Rate) and measure TX power of DUT according to the test configuration and conditions.



PERFORMANCE TEST SUMMARY (demo)

DUT NAME: demo
 REGION: EU_868
 SCENARIO: CERTI_ECHO

PER using RX1 Window : PASS									
DR	Start	Step	Stop	Target	#Pkt	Criteria	Result	Verdict	
DR_0	-132.0	1.0	-141.0	0.1	60.0	-136	-137.0/0.016	PASS	
DR_1	-129.0	1.0	-138.0	0.1	60.0	-133	-135.0/0.016	PASS	
DR_2	-128.0	1.0	-137.0	0.1	60.0	-132	-133.0/0.083	PASS	
DR_3	-125.0	1.0	-134.0	0.1	60.0	-129	-129.0/0.033	PASS	
DR_4	-122.0	1.0	-131.0	0.1	60.0	-126	-127.0/0.016	PASS	
DR_5	-119.0	1.0	-128.0	0.1	60.0	-123	-124.0/0.066	PASS	
DR_6	-115.0	1.0	-124.0	0.1	60.0	-118	-121.0/0.100	PASS	
DR_7	-100.0	1.0	-109.0	0.1	60.0	-103	-107.0/0.083	PASS	

TX Power Test : PASS									
POW	CH0	CH1	CH2	CH3	CH4	CH5	CH6	CH7	Verdict
0	12.6	12.5	12.6						PASS
1	11.0	10.8	10.9						PASS
2	8.0	8.3	8.3						PASS

Fig 3.9 Performance Test

3.2.1 How to Use

3.2.1.1 Test Configuration

Click **CONFIG TEST** to set up the test configuration: Region, DUT Type, Class, test scenario, channels, and so on. There are three types of DUT; END DEVICE, GATEWAY, and NON-SIGNAL. Available test items may be different according to the selection of Region and DUT Type parameters. There are two types of test scenario to measure PER; NORMAL_UL and CERTI_ECHO. The CERTI_ECHO requires DUT to support Certification test mode and applicable only to END DEVICE test. The NORMAL_UL uses confirmed signaling to check packet loss.

3.2.1.2 Selection and Test Condition Configuration

Select the test items to be tested by clicking the check boxes in front of the subtitles. If you click a test item, its test conditions will be shown at the right side of test items.

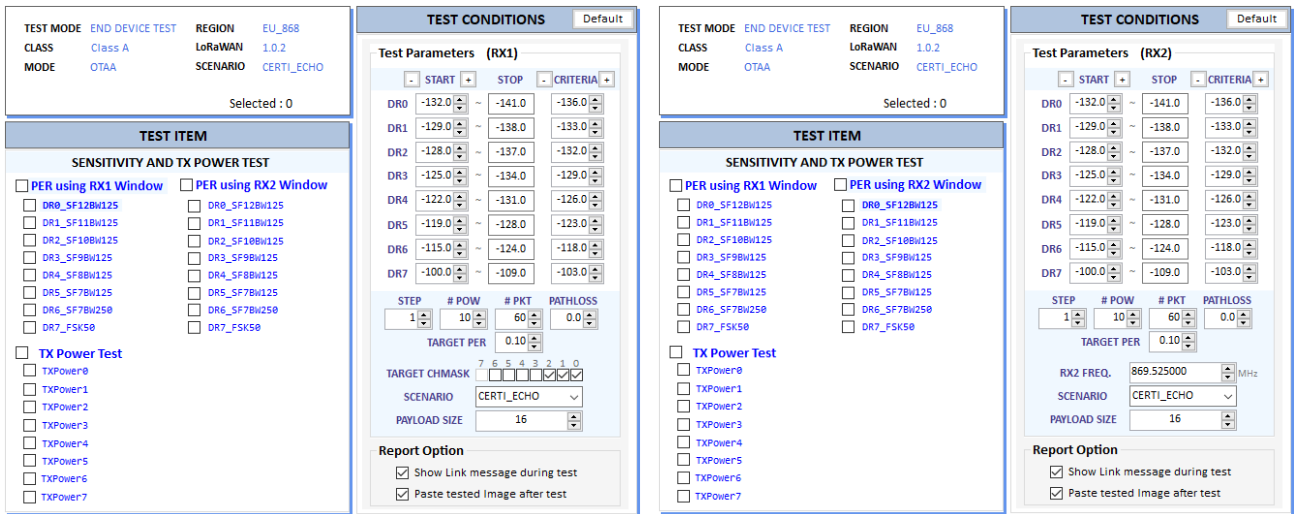


Fig 3.10 Test Conditions for PER using RX1 and RX2 Window

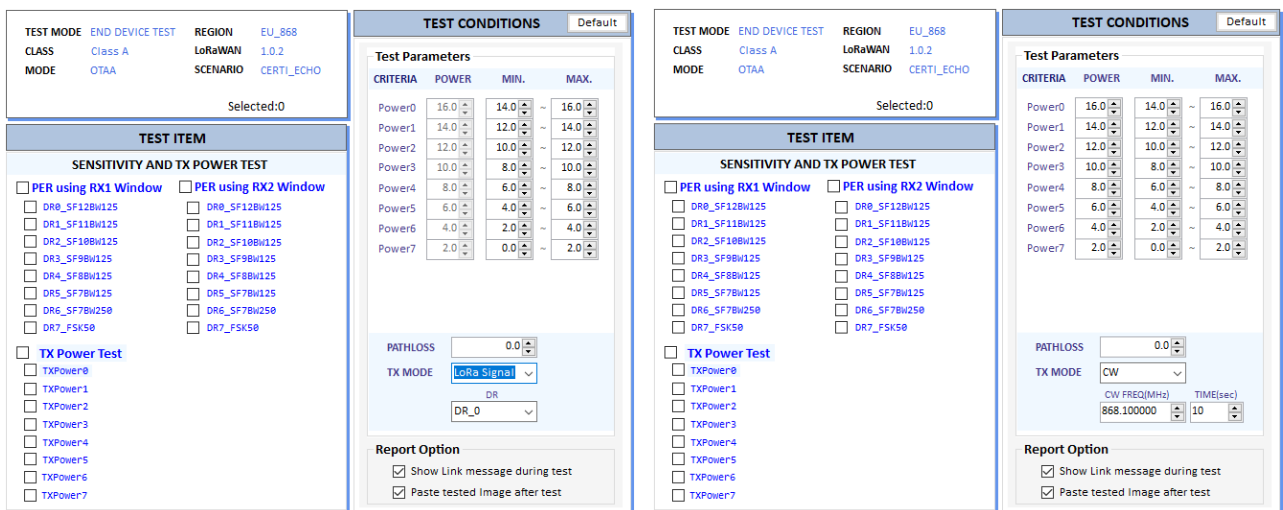


Fig 3.11 Test Conditions for TX Power Test using Lora Signal or CW

3.2.1.2 Start Test

If button is clicked, the selected test items will be tested sequentially.

3.2.1.3 Test Result – Summary Table

When the tile “SENSITIVITY AND TX POWER TEST” is clicked, the test result summary table will be shown on the result window

PERFORMANCE TEST SUMMARY (demo)									
DUT NAME		demo							
REGION		EU_868							
SCENARIO		CERT1_ECHO							
PER using RX1 Window : PASS									
DR	Start	Step	Stop	Target	#Pkt	Criteria	Result	Verdict	
DR_0	-132.0	1.0	-141.0	0.1	60.0	-136	-137.0/0.016	PASS	
DR_1	-129.0	1.0	-138.0	0.1	60.0	-133	-135.0/0.016	PASS	
DR_2	-128.0	1.0	-137.0	0.1	60.0	-132	-133.0/0.083	PASS	
DR_3	-125.0	1.0	-134.0	0.1	60.0	-129	-129.0/0.033	PASS	
DR_4	-122.0	1.0	-131.0	0.1	60.0	-126	-127.0/0.016	PASS	
DR_5	-119.0	1.0	-128.0	0.1	60.0	-123	-124.0/0.066	PASS	
DR_6	-115.0	1.0	-124.0	0.1	60.0	-118	-121.0/0.100	PASS	
DR_7	-100.0	1.0	-109.0	0.1	60.0	-103	-107.0/0.083	PASS	
PER using RX2 Window : PASS									
DR	Start	Step	Stop	Target	#Pkt	Criteria	Result	Verdict	
DR_0	-132.0	1.0	-141.0	0.1	60.0	-136	-138.0/0.083	PASS	
DR_1	-129.0	1.0	-138.0	0.1	60.0	-133	-135.0/0.033	PASS	
DR_2	-128.0	1.0	-137.0	0.1	60.0	-132	-132.0/0.083	PASS	
DR_3	-125.0	1.0	-134.0	0.1	60.0	-129	-129.0/0.000	PASS	
DR_4	-122.0	1.0	-131.0	0.1	60.0	-126	-127.0/0.000	PASS	
DR_5	-119.0	1.0	-128.0	0.1	60.0	-123	-124.0/0.050	PASS	
DR_6	-115.0	1.0	-124.0	0.1	60.0	-118	-120.0/0.000	PASS	
DR_7	-100.0	1.0	-109.0	0.1	60.0	-103	-106.0/0.050	PASS	
TX Power Test : PASS									
POW	CH0	CH1	CH2	CH3	CH4	CH5	CH6	CH7	Verdict
0	12.6	12.5	12.6						PASS
1	11.0	10.8	10.9						PASS
2	8.0	8.3	8.3						PASS
3	5.4	5.3	5.5						PASS
4	3.1	3.1	3.3						PASS
5	0.8	0.8	0.8						PASS
6	-1.1	-1.0	-1.4						PASS
7	1.2	1.0	1.4						PASS

Fig 3.12 Test Result – Summary Table

3.2.1.4 Test Result – Detail Report

When the subtitle “PER using RX1 Window” is clicked, all tested results will be shown on the result window from SF12 to SF7 at the same time. When the test item title is clicked, the selected item’s test result will be shown on the result window.

PERFORMANCE TEST RESULT	
PER using RX1 Window : DR0_SF12BW125	
[TEST CONDITION]	
[PROTOCOL CONFIGURATION]	
REGION	: EU_868
CHANNEL	: 0x7
DUT TYPE	: END DEVICE TEST
CLASS	: Class A
SCENARIO	: CERT1_ECHO
PAYLOAD LENGTH	: 16
[SENSITIVITY]	
START POWER	: -132.0 dBm
STEP POWER	: 1.0 dB
NUMBER OF POWER	: 10
STOP POWER	: -141.0 dBm
PATH LOSS	: 0.0
RX Window	: RX1
RX SPREADINGFACTOR	: DR0_SF12BW125
NUMBER OF PACKET	: 60
Target PER	: 0.1
SENSITIVITY CRITERIA	: -136 dBm
[TEST RESULT]	
[SENSITIVITY RESULT]	
Measured PER	: 0.0
Measured Sensitivity	: -137.0 dBm
[VERDICT]	
PASS	
[Elapsed Time] 00:48:03	

Fig 3.13 Test Result – Detail Report

3.2.1.5 Report Option

There are two options for reporting the test results as the following figure.

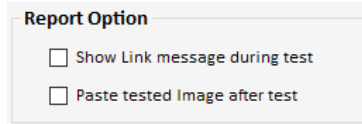


Fig 3.14 Report Option

If “Show Link Message during test” is checked, Link messages during test will be attached in the test report.

[LINK MESSAGE]

L	CH	SF	BW	POW	TIME	FCNT	Adr	Ack	B	FP	M	CMD	
U	0	7	125	11.6	REF	----	0	0	-	-	-	Join-request	Nonce=4195
D	0	7	125	-30.0	----	----	0	0	-	-	-	Join-accept	RX1DROffset=0, RXDeLa
U	2	12	125	11.8	7.80s	0000	0	0	-	002	U	DataUp	Bytelen=16
D	2	12	125	-30.0	----	0001	0	0	-	224	U	ActivateTM	
U	1	12	125	11.9	8.44s	0001	0	0	-	224	U	DownlinkCounter	Cnt=0
D	1	12	125	-30.0	----	0002	0	0	-	000	U	LinkADRReq	Pow=1,DR=0,Mask=07h,N
U	1	12	125	11.8	5.18s	0002	0	0	-	224	U	LinkADRAns	Pow=1, DR=1, Mask=1
D	1	12	125	-30.0	----	0003	0	0	-	224	U	EchoRequest	EchoLen=16
U	0	12	125	11.8	5.35s	0003	0	0	-	224	U	EchoResponse	Echo PASS
D	0	12	125	-132.0	----	0004	0	0	-	224	U	EchoRequest	EchoLen=16
U	2	12	125	11.8	5.02s	0004	0	0	-	224	U	EchoResponse	Echo PASS

Fig 3.15 Link Messages attached in Test Report

If “Paste tested Image after test” is checked, the result figure will be attached in the test report.

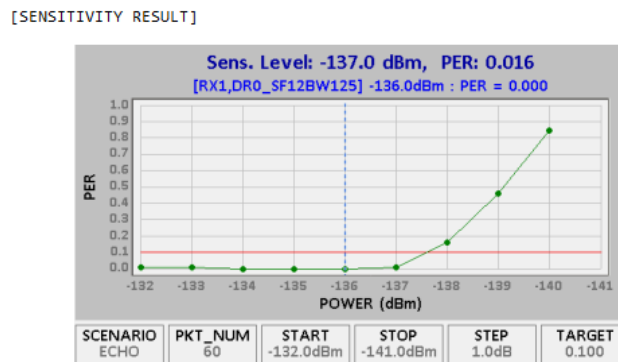


Fig 3.16 Result Figure attached in Test Report

3.2.2 Test options

3.2.2.1 Change SF during test

If “Change SF during test” is checked, it makes RWC5020A send commands to make DUT change

spreading factor according to the test item.

3.2.2.2 Show Result Graph

If “Show Result Graph” is checked, it shows PER curve or TX power graph while or after test as the following figure.

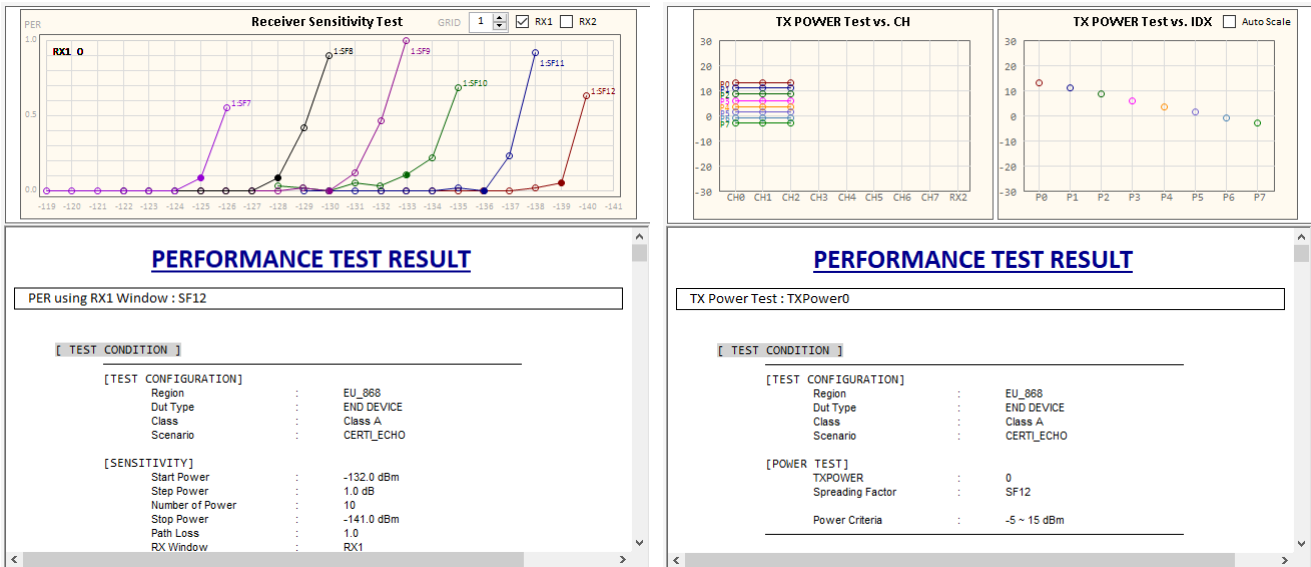


Fig 3.17 Show Result Graph of PER and TX Power

3.2.2.3 View Remote Message

If “View Remote Message” is checked, it shows remote control commands and responses between the application and RWC5020A.



Fig 3.18 Remote Message

3.3 Link Analyzer

Link Analyzer helps to dump all link messages from RWC5020A while communicating with DUT. In addition, users can configure a single or multiple MAC commands in a single LoRa frame and send it anytime by clicking button.

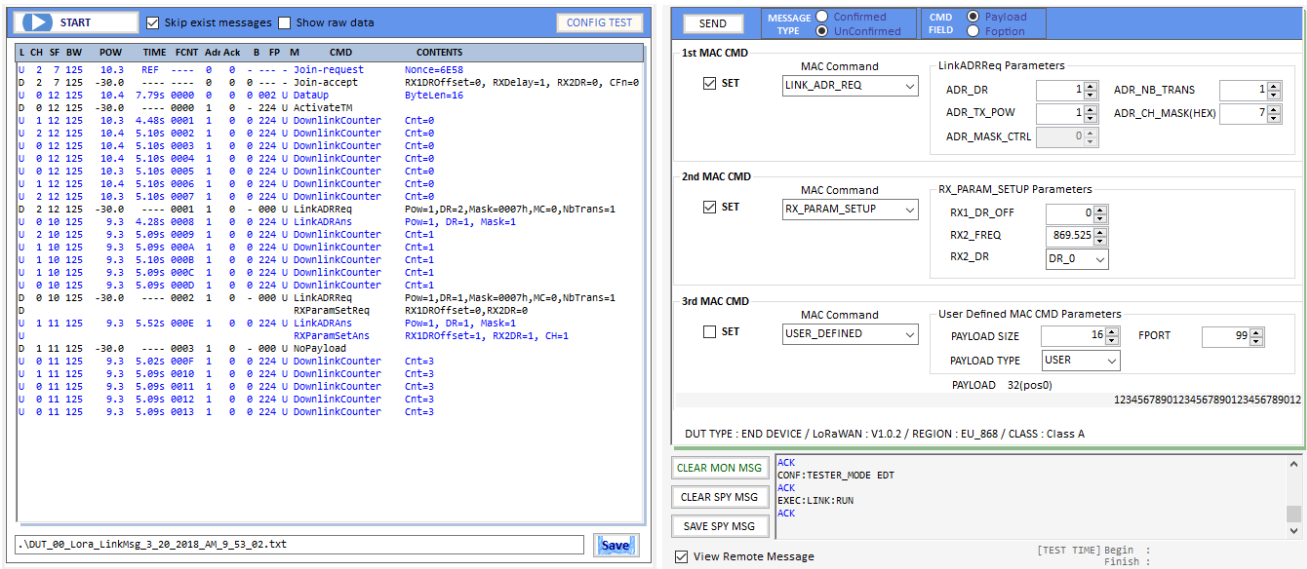


Fig 3.19 Link Analyzer

3.3.1 Dumping link message

Clicking makes RWC5020A start dumping link messages between RWC5020A and DUT line by line. Clicking button makes RWC5020A stop dumping.

3.3.2 MAC commands editor

With or without dumping, you can edit MAC commands and make RWC5020A send MAC command(s). User can send multiple MAC commands in single frame. The maximum number of multiple MAC commands in a frame is three with RWC5020A.

Define the PAYLOAD TYPE as UNCONFIRMED or CONFIRMED and define the CMD FIELD as PAYLOAD or FOPTION. If you want to select multiple MAC commands in a single frame, click 'SET' check box for each MAC CMD.

Clicking makes RWC5020A send MAC command to DUT at the next TX slot of RWC5020A. After clicking , the button's color and text will be changed like . After RWC5020A transmits MAC command, they will be returned like .

3.4 Utilities

It consists of 3 functions: DUT Control, Tester(RWC5020A) Control, and Screen capture.

3.4.1 DUT Control

This function is a simple terminal tool. It helps user control DUTs through RS232 using string command. User can transmit DUT control commands all by one click or line-by-line.

3.4.1.1 How to Use



Just typing user own remote control commands and clicking  transmits commands to RWC5020A sequentially. User can use a special command SLEEP which just lets PC wait transmitting for described time. The parameter of SLEEP is time in millisecond unit, e.g., SLEEP 1000 makes PC wait for 1000ms.



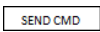
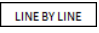


Fig 3.20 DUT Control

3.4.1.2 Verify Commands

Clicking  verifies the commands on editor. Verifying criteria is based on the loaded user commands. Verified commands will be colored. The blue colored commands are user commands, and the grey colored ones are not user commands.


3.4.1.3 Transmit Methods

Clicking  starts transmitting commands. Transmitting commands will be stopped if you click  or all commands are transmitted. Clicking  transmits the selected command. Clicking  transmits listed commands line by line.

3.4.2 Tester (RWC5020A) Control

This function is a simple terminal tool. It helps user control RWC5020A through LAN using string command. User can transmit RWC5020A remote commands all by one click or line-by-line.

3.4.2.1 How to Use

Clicking  starts transmitting commands on command window sequentially. User can use a special command SLEEP. It makes PC wait for transmitting the next command. The parameter of SLEEP is time in millisecond unit, e.g., SLEEP 1000 makes PC wait for 1000ms.

3.4.2.2 Template

Template functions will fill the commands window with ready-made commands sequence as an example.

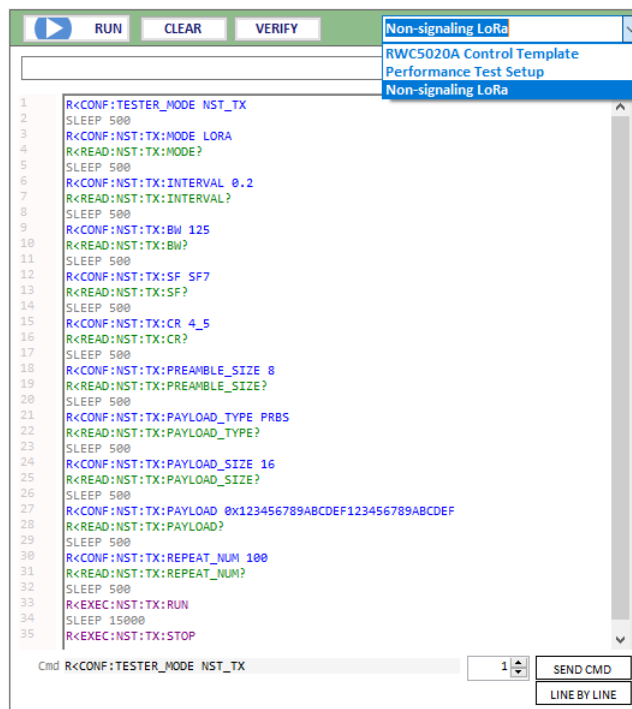


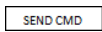
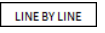
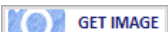


Fig 3.21 Tester Control

3.4.2.3 Transmit Methods

Clicking  starts transmitting commands. Transmitting commands will be stopped if you click  or all commands are transmitted. Clicking  transmits the selected command. Clicking  transmits listed commands line by line increasing the command number.

3.4.3 Screen Capture

Clicking  captures and shows the current screen of the connected RWC5020A and save it as a bmp file. If you click one of listed up file on list window, the selected bmp file will be shown on image window.

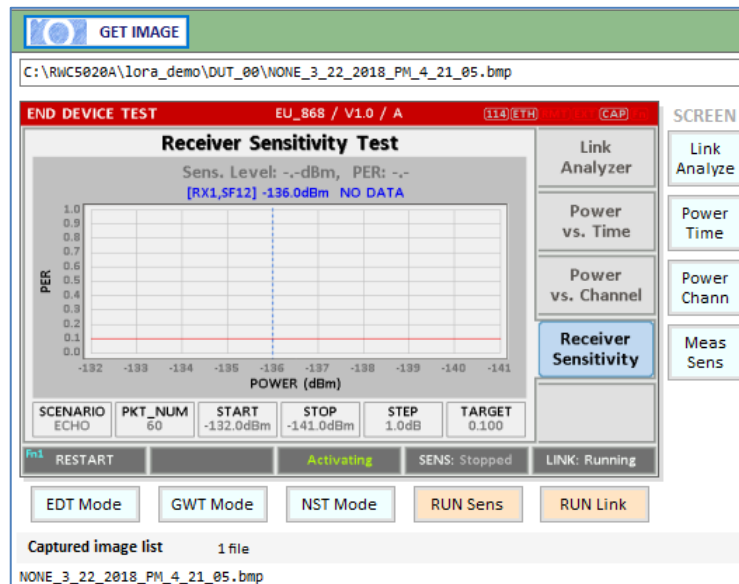


Fig 3.22 Screen Capture

3.4.4 Function for Manufacturing

This function is for quick test for manufacturing. It helps user measure PER and the TX power of DUT very fast and easily.

For this function, a special function has to be prepared in DUT.

In the special mode of DUT, transmitting MEAS_START_FLAG, counting packets, recognizing MEAS_STOP_FLAG, and transmitting 3 same report frames functions should be prepared.

For the DUT information, “user data” such as serial number can be added In the MEAS_START_FLAG packet

3.4.4.1 Test concept

MEAS_START_FLAG packet transmitted from DUT makes RWC5020A start transmitting packets to DUT at the power specified by user. After transmitting the MEAS_START_FLAG, DUT must switch to RX mode to receive packets from RWC5020A and count the number of the packets received.

After transmitting all packets, RWC5020A transmits MEAS_END_FLAG packet that makes DUT stop counting and report the number of received packets.

After receiving the MESA_END_FLAG from RWC5020A, DUT must transmit report frame including the number of received frames 3 times within TIMEOUT time.

RWC5020A calculated PER with the reported information. Whenever DUT transmits any frame

RWC5020A measures the TX power of DUT and show the averaged value after receiving report packets.

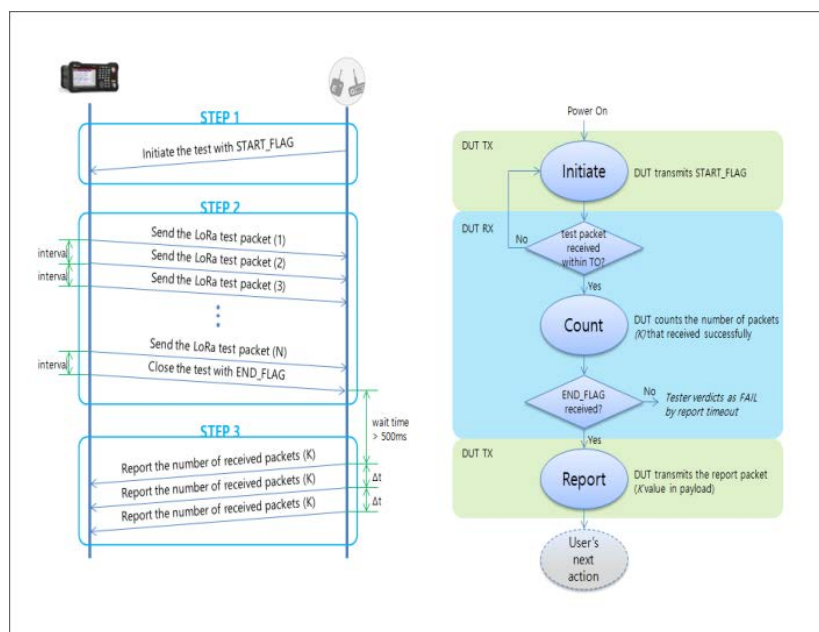


Fig 3.23 Test scenario for manufacturing

3.4.4.2 Test configuration

Click [CONFIG](#) to set up the MFG configuration

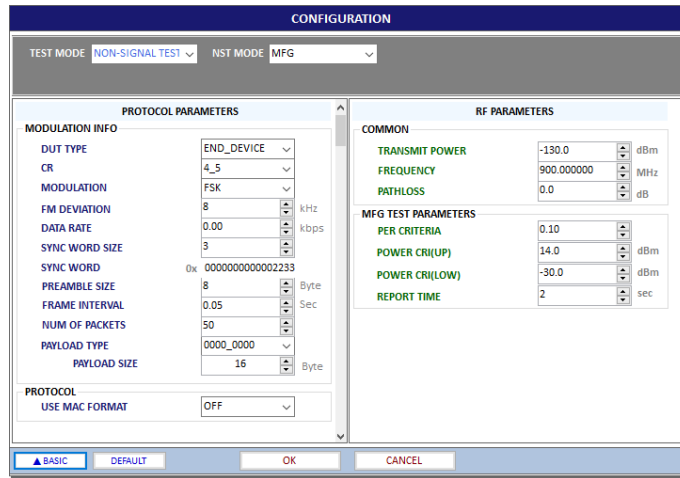


Fig 3.24 Configuration window for MFG

3.4.4.2 Operation example

Clicking makes RWC5020A wait the MEAS_START_FLAG MFG from DUT.



Fig 3.25 The screen of MFGA of RWC5020A and PC App. waiting for MEAS_START_FLAG from DUT

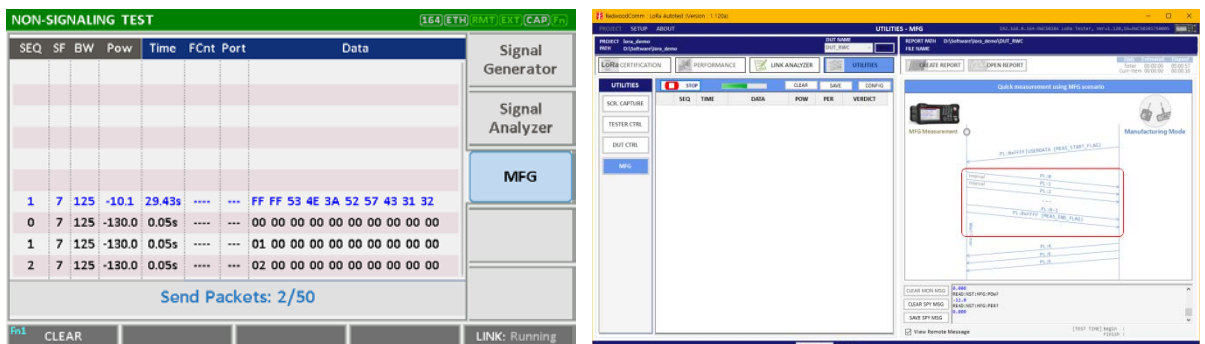


Fig 3.26 The screen of MFG of RWC5020A and PC App. while transmitting packets

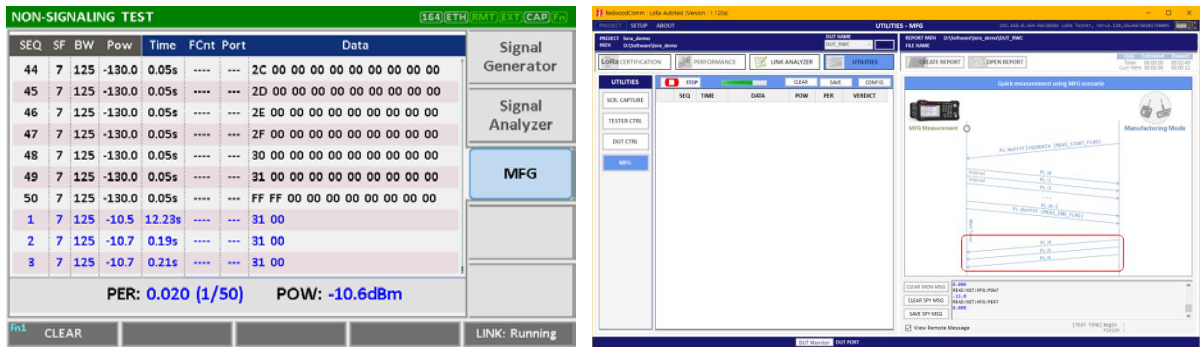


Fig 3.27 The screen of MFG of RWC5020A and PC App. waiting for report frames from DUT

3.4.4.3 Getting the result

User can take measured result PER and TX Power of DUT using remote commands.

Commands for

Reading the measured power of DUT : `READ:NST:MFG:POW?`

Reading the measured PER of DUT : `READ:NST:MFG:PER?`

Reading the user data in MEAS_START_FLAG frame : `READ:NST:MFG:DUT_INFO?`

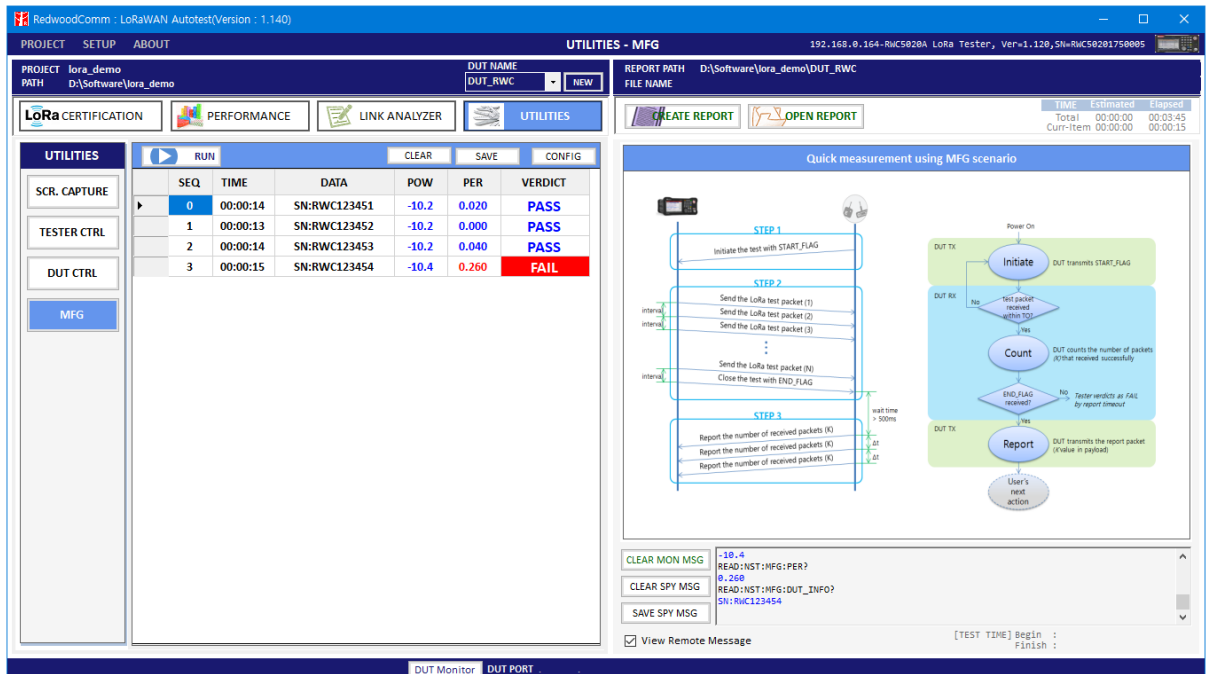


Fig 3.28 Example test using 4 DUTs(N=50, Target PER=0.1)



IV. Report Functions

This chapter explains how to handle test reports for various kinds of test results. With report functions, user can see a report messages while test, and create a report file after test finished and open it whenever user want to.

4.1 Report File Manager

4.1 Report File Manager

4.1.1 Create Report

Clicking  pops up the save file window. You can change file name and save the result document. The result file will be saved as a word document.  will be enabled on Certification and Performance tab.

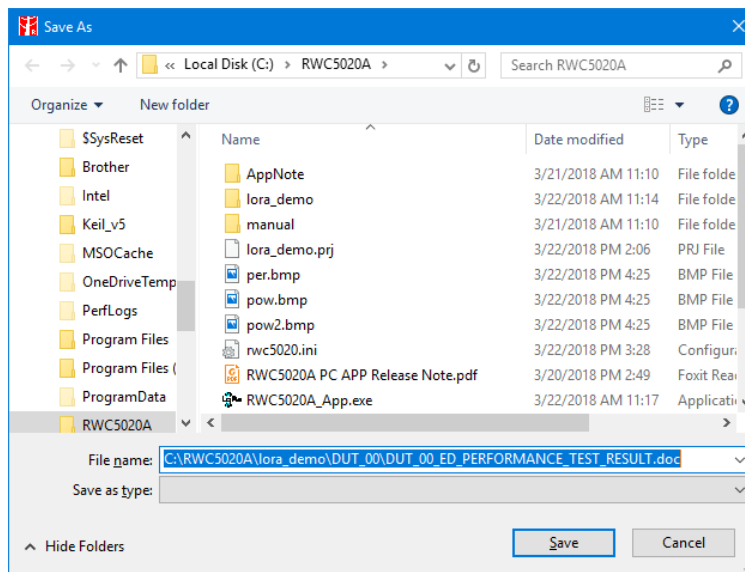



Fig 4.1 Creation of Test Report File

4.1.2 How to Open the Saved Report File

Clicking  pops up a REPORT LIST window. Double clicking on a file name opens the selected file. The reading tool is Microsoft Word installed on your PC.

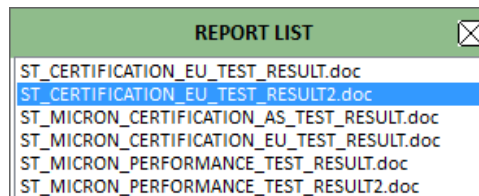


Fig 4.2 List of Test Report File

V. Revision History

Version	Date	Description
V1.11	2018.03.22	- Created for Firmware version: V1.11
V1.12	2018.04.25	- Modified for Firmware version: V1.12
V1.13	2018.07.19	- Modified for Firmware version: V1.13
V1.14	2018.10.10	- Modified for Firmware version: V1.14